



## **Installation Guide**

**RG-SMP Professional\_2.63\_EN\_Build20151106&**



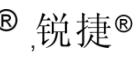
**RG-SMP Professional\_2.63\_EN\_Build20151106 Upgrade  
(From 2.6)**

## Copyright Statement

Ruijie Networks©2015

Ruijie Networks reserves all copyrights of this document. Any reproduction, excerption, backup, modification, transmission, translation or commercial use of this document or any portion of this document, in any form or by any means, without the prior written consent of Ruijie Networks is prohibited.

 ,  ,  ,  ,  ,  ,  
**RGOS**<sup>®</sup> , **RGNOS**<sup>®</sup> ,  ,

 ,  ,  are registered trademarks of Ruijie Networks. Counterfeit is strictly prohibited.

## Exemption Statement

This document is provided “as is”. The contents of this document are subject to change without any notice. Please obtain the latest information through the Ruijie Networks website. Ruijie Networks endeavors to ensure content accuracy and will not shoulder any responsibility for losses and damages caused due to content omissions, inaccuracies or errors.

## Obtaining Technical Assistance

- Ruijie Networks website: <http://www.ruijienetworks.com/>
- Ruijie service portal: <http://case.ruijienetworks.com>

# Contents

<b>Contents</b> .....	<b>3</b>
<b>1 About This Document</b> .....	<b>4</b>
<b>2 System Requirements</b> .....	<b>4</b>
2.1 Hardware Requirements .....	4
2.2 Software Requirements.....	5
<b>3 Installing RG-SMP</b> .....	<b>5</b>
3.1 Precautions .....	5
3.2 Installation Procedure .....	5
3.3 Upgrade Procedure .....	8
3.4 License Configuration .....	12

# 1 About This Document

Thank you for choosing the RG-SMP Security Management Platform (hereinafter referred to as RG-SMP). We prepare a detailed user manual to guide you through related operations quickly. We also attach an e-document to the RG-SMP installation CD-ROM. It provides you with information such as the installation environment, basic configuration, and instructions for use of software, thus fully addressing your needs.

Before you install and use RG-SMP for the first time, please read through the data delivered with the installation CD-ROM carefully.

To better suit your needs, RG-SMP is subject to change from time to time, which may result in a variance from functions stated in the RG-SMP installation guide. Ruijie Networks assumes no responsibility for any consequences arising from the variance. We sincerely apologize for any inconvenience caused to you. Any change to RG-SMP will be updated in time at the website of Ruijie Networks. Please follow our updates or call our customer service hotline to obtain the latest information of RG-SMP.

Your feedback is welcome.

The information in this document is under copyright protection. No part of this document may be printed, reproduced, or used in any form or by any means without prior written consent of Ruijie Networks.

## 2 System Requirements

Before installing RG-SMP, ensure that the server or PC on which RG-SMP will be installed meets the software and hardware requirements described below.

### 2.1 Hardware Requirements

#### 2.1.1 Recommended

- CPU: quad-core, each with a clock speed of 3 GHz or above
- Memory: 4 GB or above
- Hard disk space: 400 GB
- Network adapter: 1000 Mbps

#### 2.1.2 Minimum

- CPU: dual-core, each with a clock speed of 2 GHz or above
- Memory: 2 GB
- Hard disk space: 80 GB
- Network adapter: 100 Mbps or above

## 2.2 Software Requirements

- Microsoft Windows Server 2003 / Microsoft Windows Server 2008/ Microsoft Windows Server 2008 R2
- Microsoft SQL Server 2000 Enterprise Edition + SP4 / Microsoft SQL Server 2005 Enterprise Edition + SP3 / Microsoft SQL Server 2008 Enterprise Edition / Microsoft SQL Server 2008 R2 Enterprise Edition

## 3 Installing RG-SMP

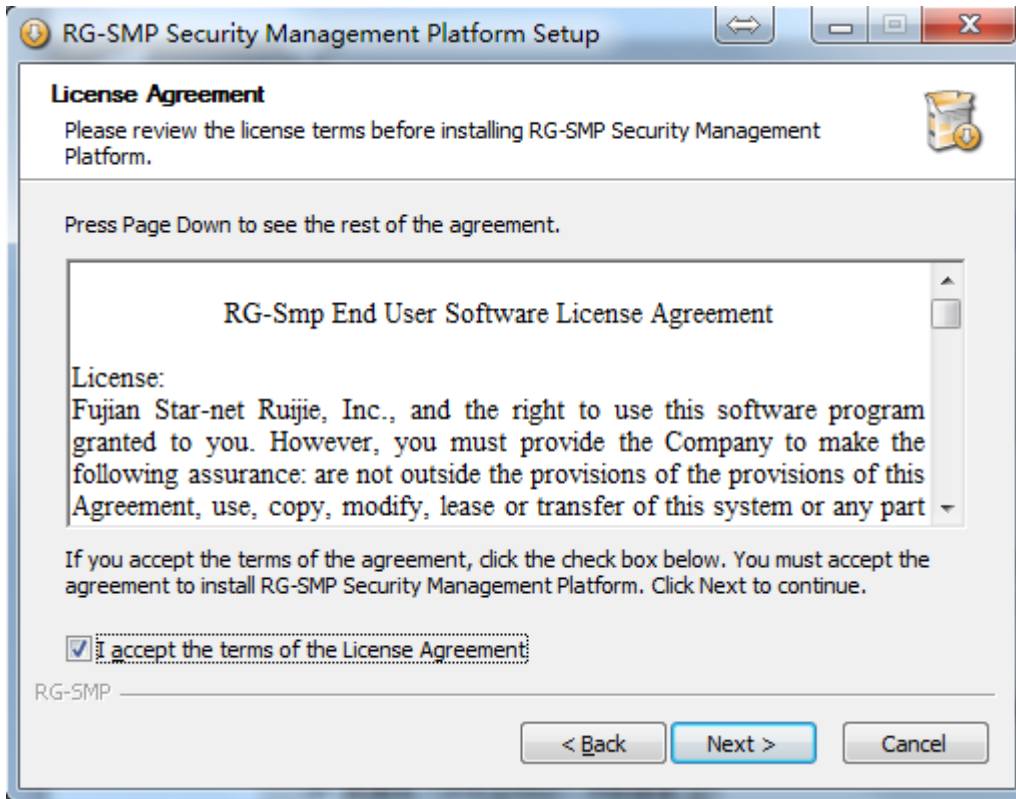
### 3.1 Precautions

1. If RG-SMP of an earlier version has been installed, go to **Start > Control Panel > Add or Remove Programs** and uninstall the RG-SMP.
2. Before RG-SMP installation, check that the ports to be used by RG-SMP are unoccupied.

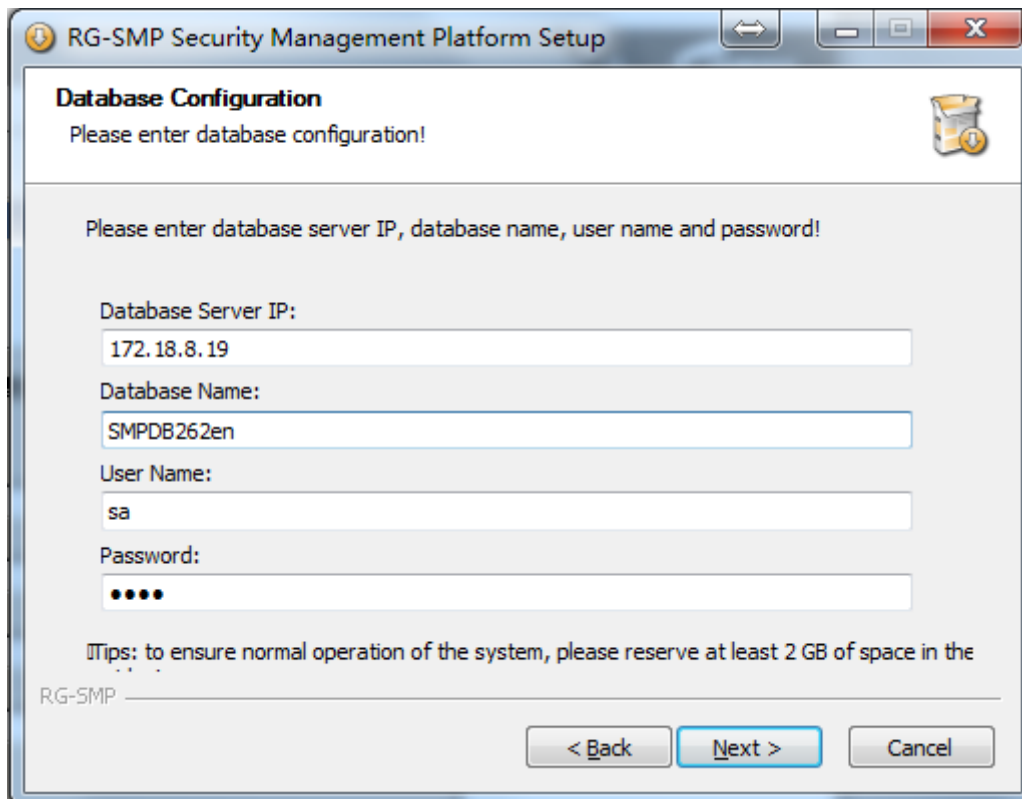
Port Number	Port Type	Function
53	UDP	Communicates with the Ruijie client SU/SA.
162	UDP	Receives Trap or Inform packets from switches or network intrusion detection system (NIDS) devices.
1098	TCP	Used by the JBoss service.
1099	TCP	Used by the JBoss service.
1812	UDP	Listening port for RADIUS authentication.
1813	UDP	Listening port for RADIUS accounting.
3930	UDP	Source port for sending standard RADIUS offline packets to devices.
4444	TCP	Used by the JBoss service.
4445	TCP	Used by the JBoss service.
8080	TCP	Used to log in to RG-SMP through HTTP.
8083	TCP	Used by the JBoss service.
8093	TCP	Used by the JBoss service.
8443	TCP	Used to log in to RG-SMP through HTTPS.
9090	TCP	Used to access third-party Web services.
80	TCP	Used by Web authentication, and to login to a self-service platform.
443	TCP	Web port used by HTTPS

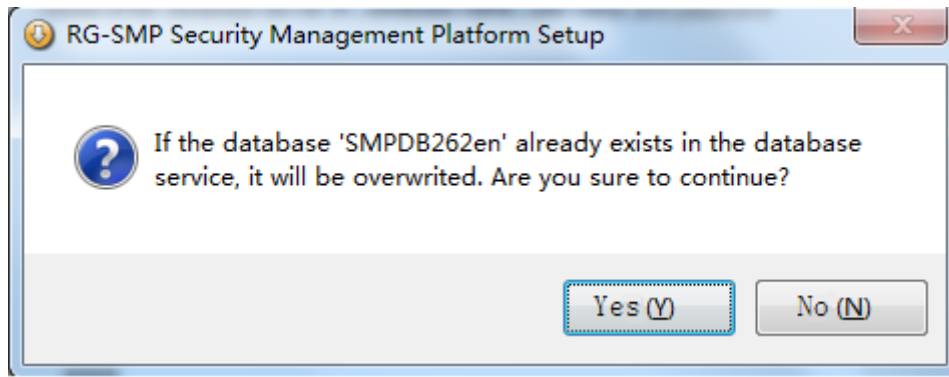
### 3.2 Installation Procedure

1. Double-click the RG-SMP installation program in the RG-SMP installation CD-ROM. Click **Next** in the installation wizard.
2. Read through the RG-SMP End User Software License Agreement in the **License Agreement** window. Check the option below to accept the terms of the License Agreement. Click **Next** to continue.



3. Fill in the **Database Server IP**, **Database Name**, **User Name**, and **Password** fields in the **Database Configuration** window. Click **Yes** in the displayed dialog box.

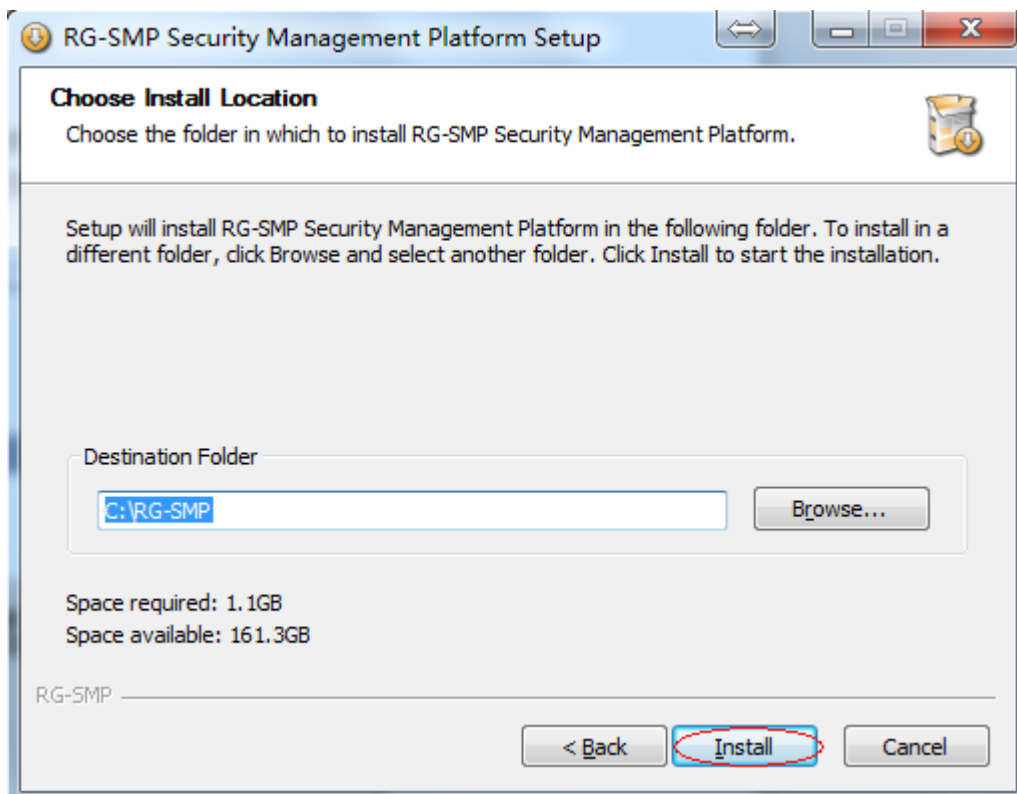




**Note:**

- The installation will fail if database setting is incorrect.
- An existing database with the same name on the database server will be overwritten during installation. Ensure that the database has been backed up.
- If you have changed the user name or password of the SQL Server after installing RG-SMP, change the user name or password on the Service Manager of RG-SMP accordingly; otherwise, RG-SMP cannot be used.
- If the database fails to be installed, uninstall and then reinstall RG-SMP.

4. Select the installation directory of RG-SMP and click **Install**.





**Note:**

- It is recommended that RG-SMP be installed in any disk partition except the system partition.
- The name of the installation directory cannot contain Chinese characters or spaces; otherwise, RG-SMP cannot be started normally.

5. Click **Next**. The installation is completed.

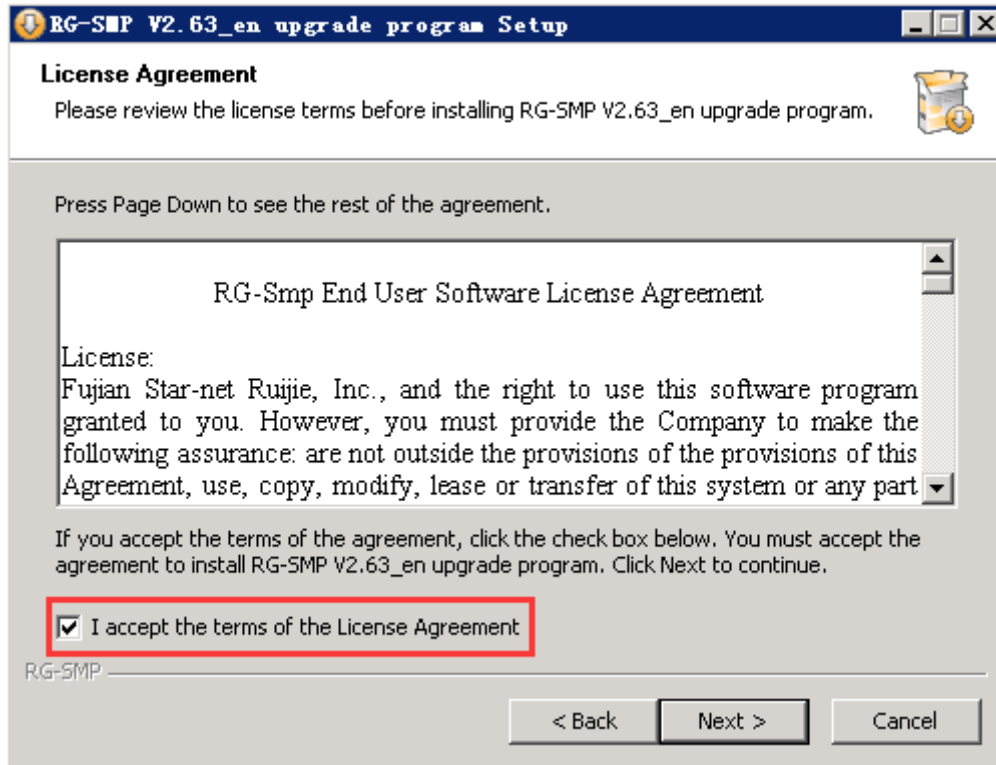
### 3.3 Upgrade Procedure

1. Double-click the RG-SMP upgrade program in the RG-SMP installation CD-ROM. Click **Next** in the Setup Wizard.

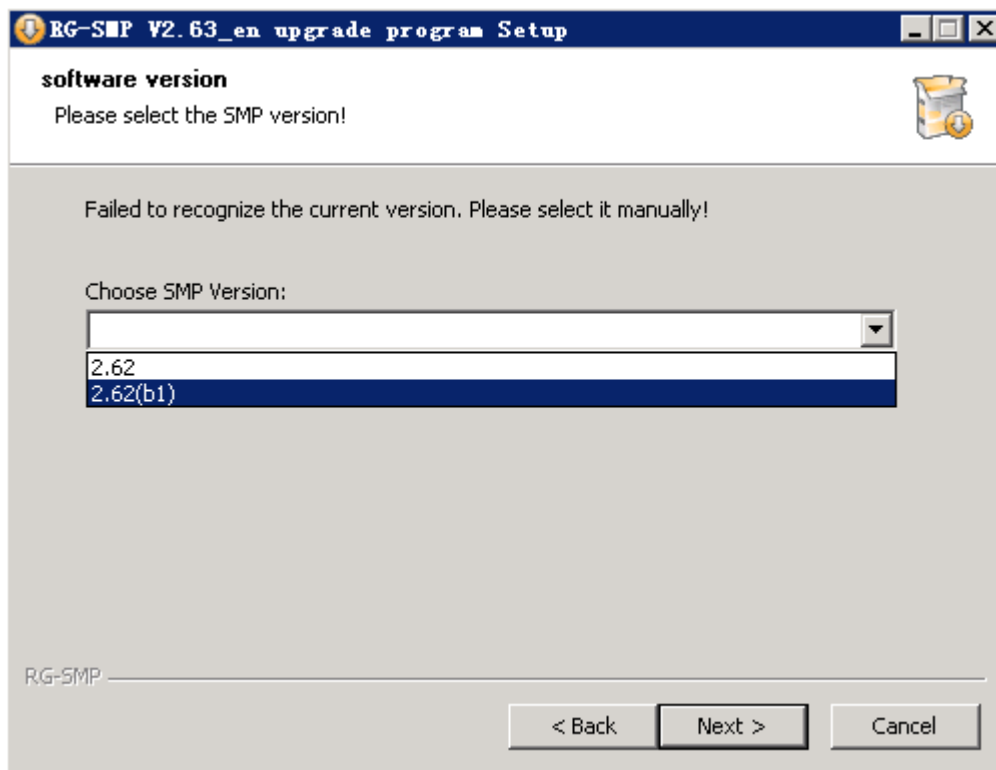




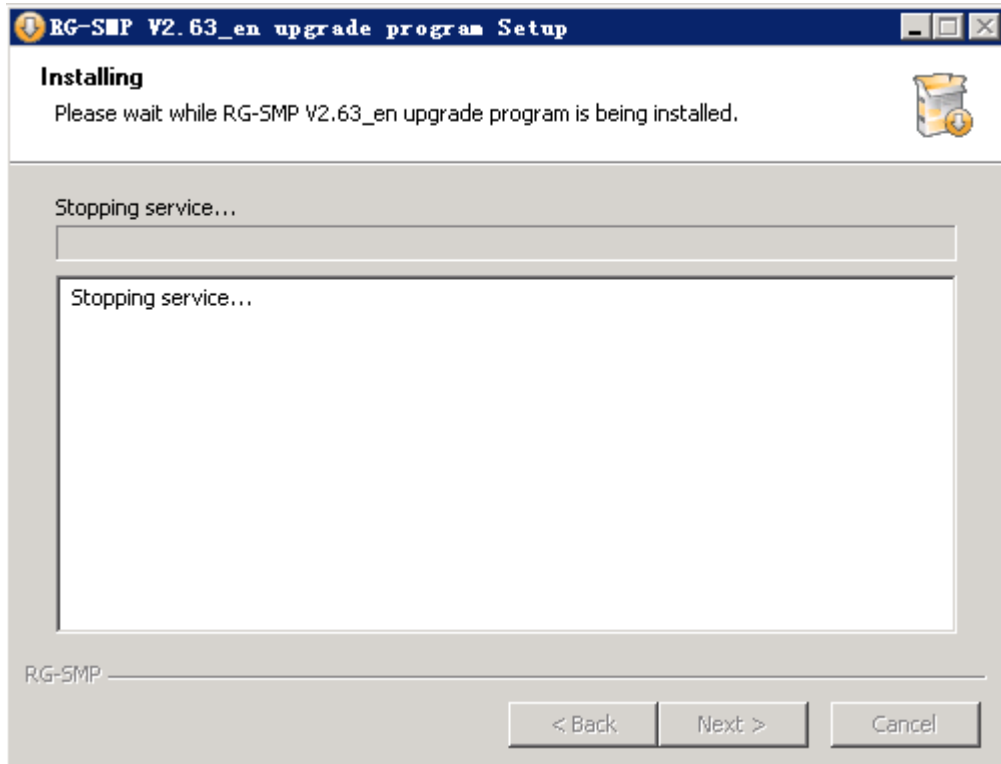
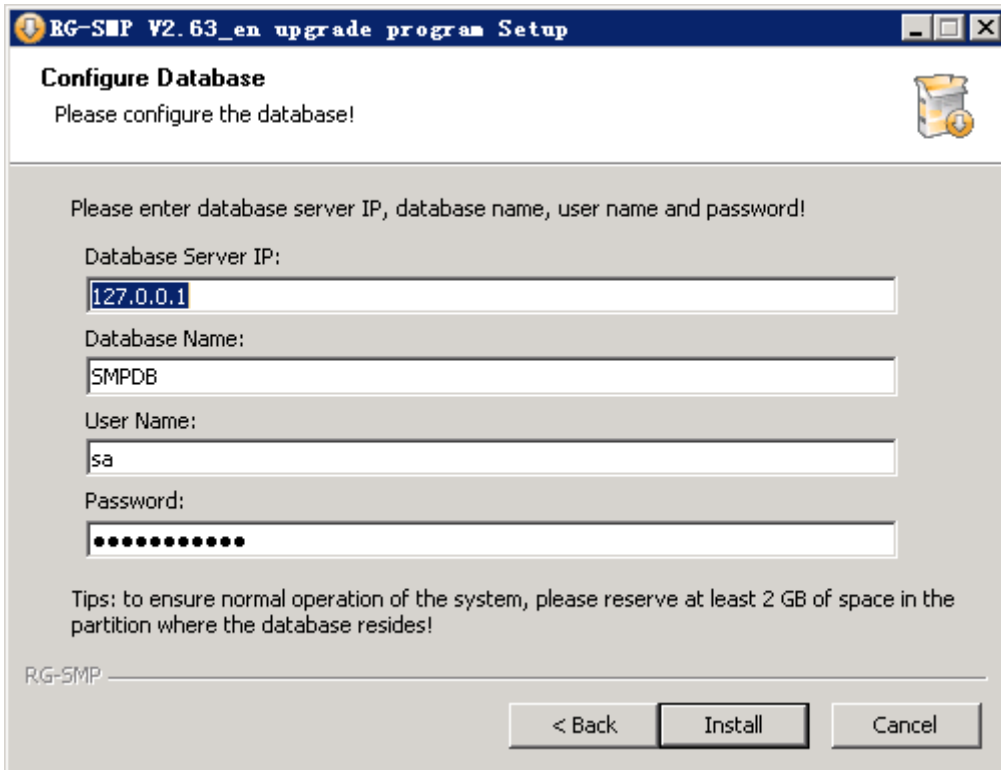
2. Read through the RG-SMP End User Software License Agreement in the **License Agreement** window. Check the option box below to accept the terms of the License Agreement. Click **Next** to continue.

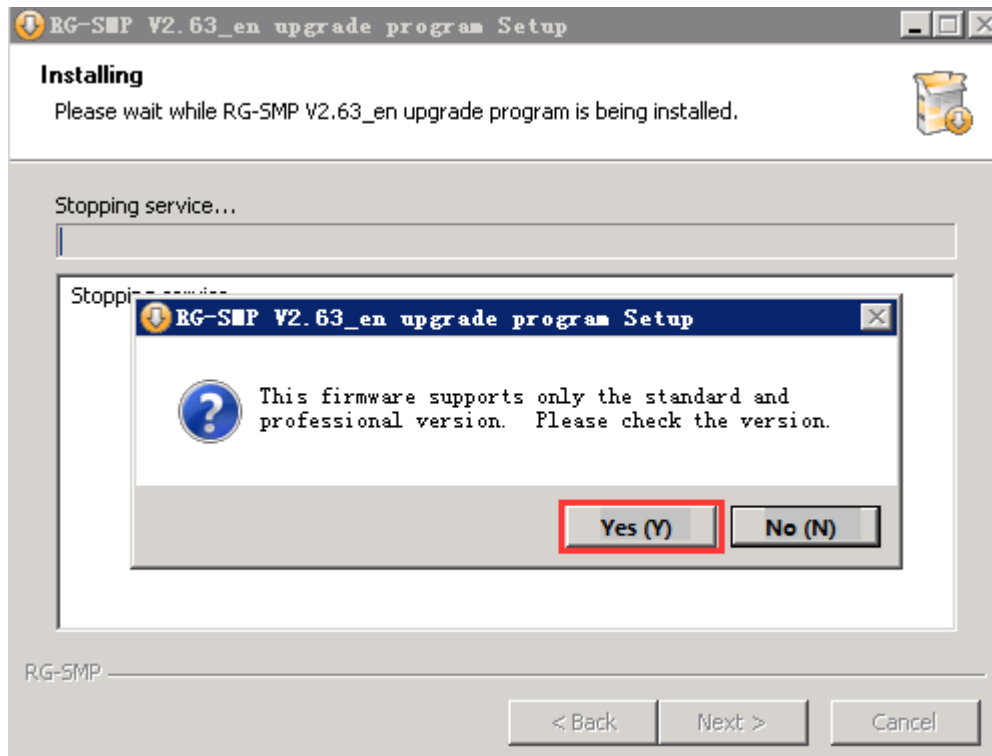


3. Choose the **SMP Version**. Click **Next** in the displayed dialog box.

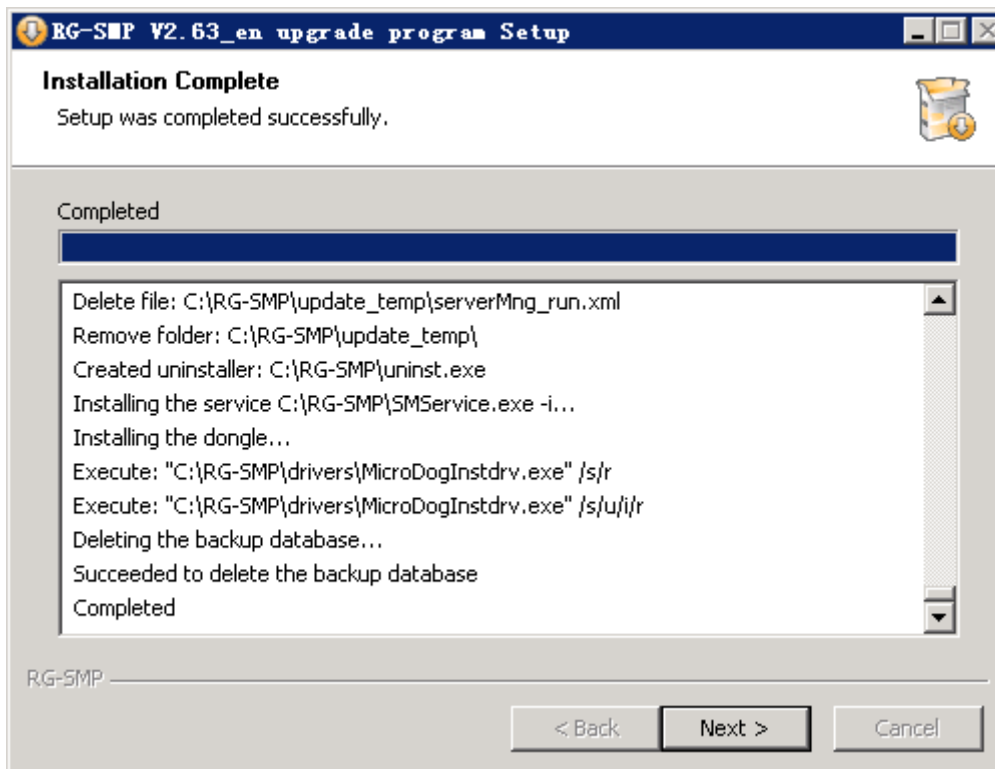


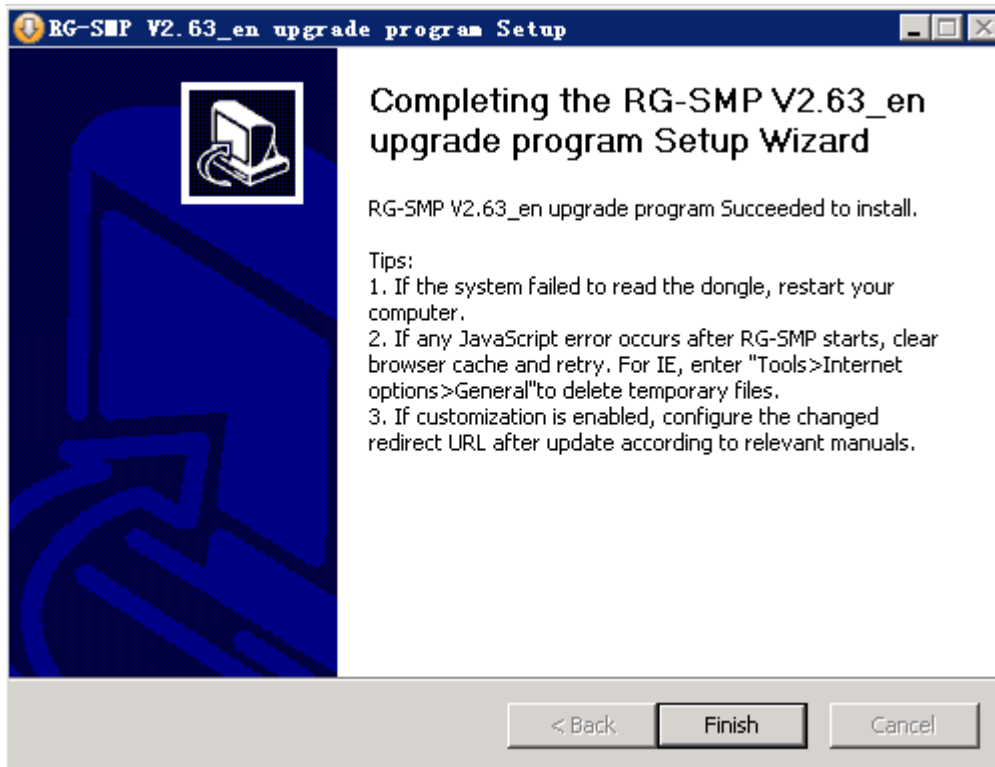
4. Fill in the **Database Server IP**, **Database Name**, **User Name**, and **Password** fields in the **Configure Database** window. Click **Install** in the displayed dialog box.





5. Click **Next** to complete the upgrade.





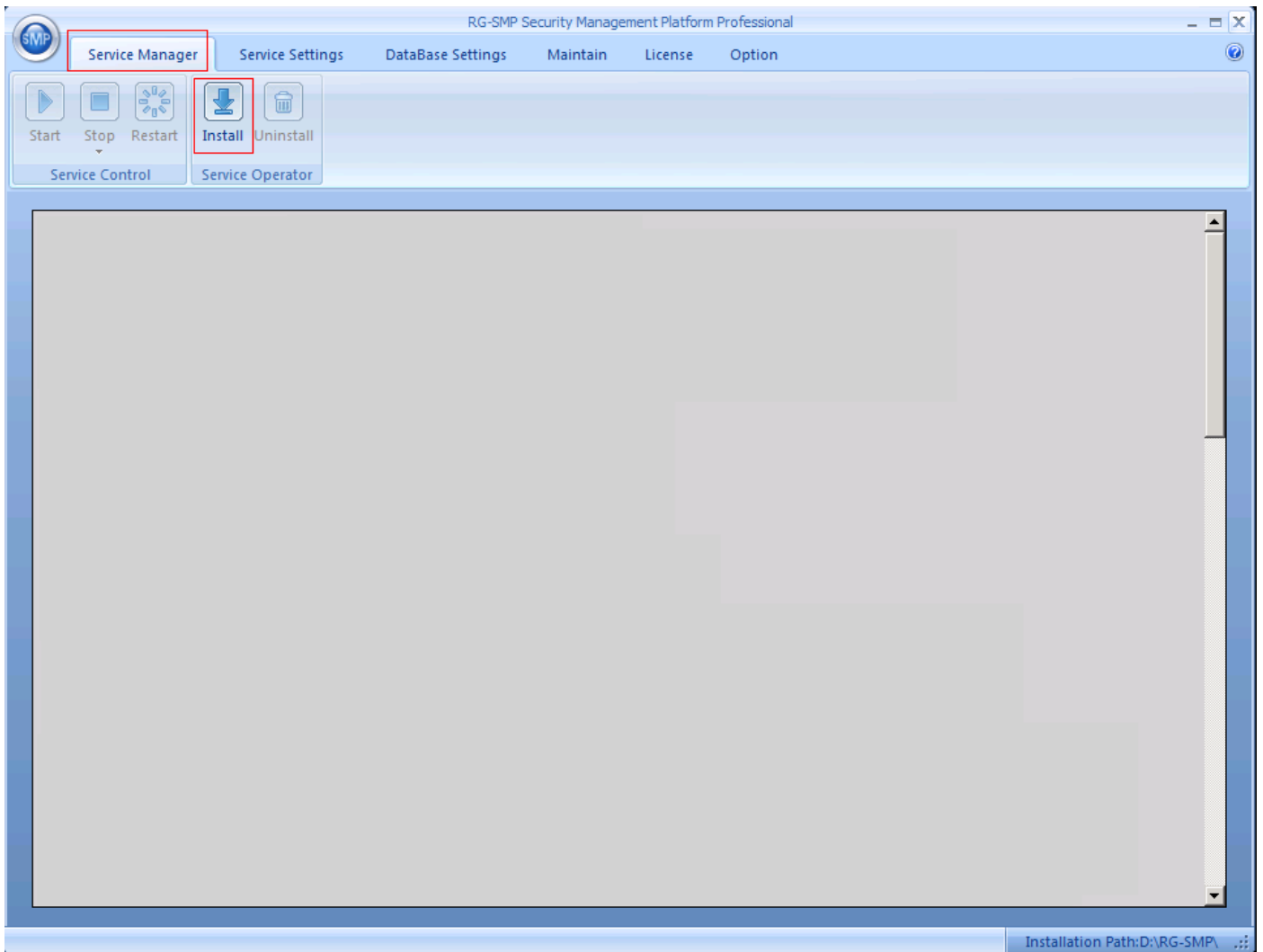
## 3.4 License Configuration

License authorization is intended for users who have purchased the license files. Users can import the license files to start RG-SMP and use the available services.

### 3.4.1 Importing License

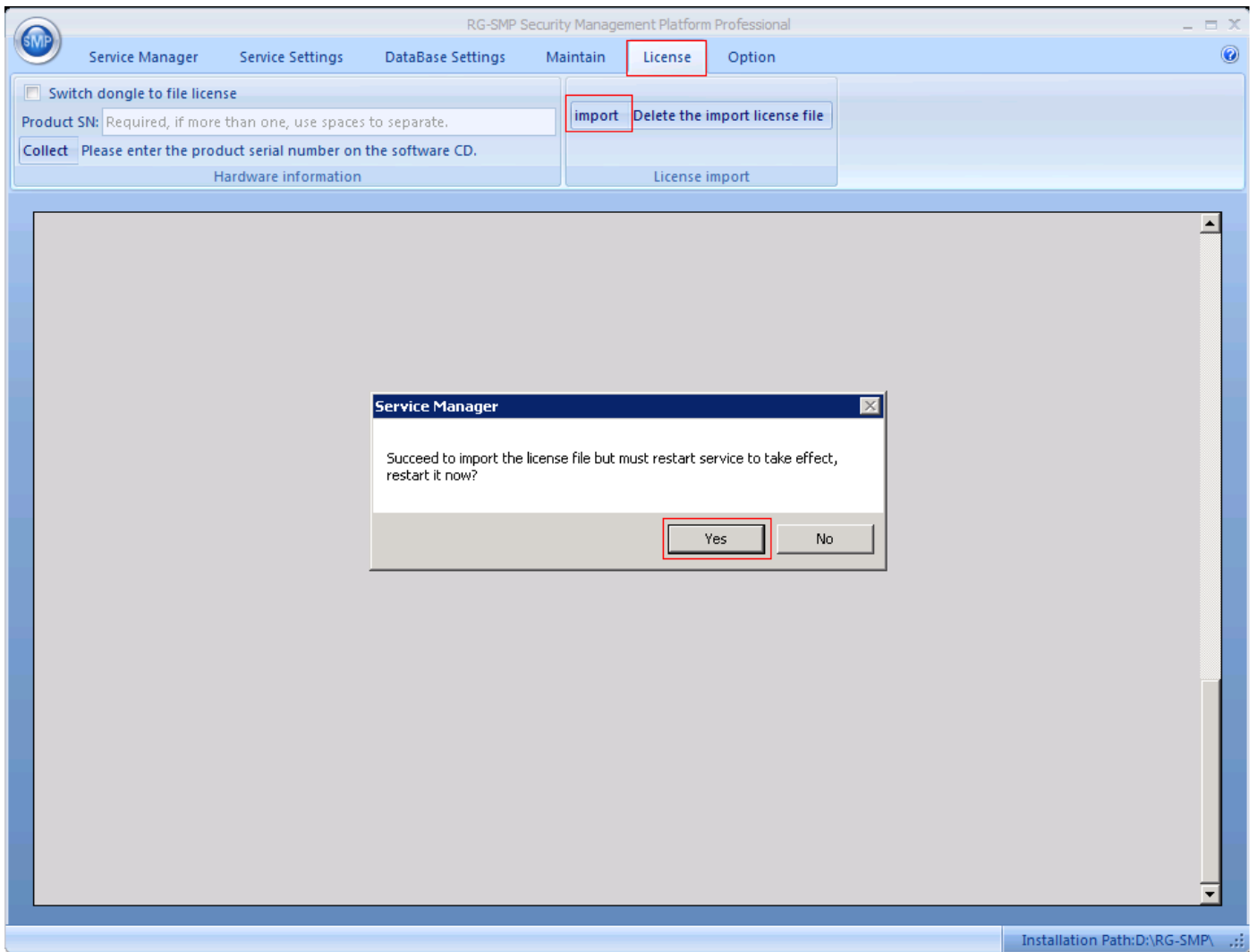
After installing RG-SMP successfully, complete service installation so that RG-SMP can be started normally.

1. Choose **Start > All Programs > Ruijie Networks > Security Management Platform > RG-SMP Security Management Platform** in PCs to start the Service Manager of RG-SMP.
2. Choose **Service Manager > Install** in the Service Manager. Click **Yes** in the displayed dialog box.



3. Import the license file.

Choose **License > Import** to import the purchased license file (.lic). When the license file is imported successfully, a dialog box prompting you to restart RG-SMP is displayed. Click **Yes**.



4. Visit <http://local IP address:8080/smp/index.jsp> after the Service Manager prompts you that RG-SMP is started. The RG-SMP login page will be displayed. You can log in as the default system administrator.
  - The default username and password of the RG-SMP administrator are **admin** and **11111111**.



**Note:**

- Change the password immediately after the first login. For details about how to use RG-SMP, see the *RG-SMP Professional\_2.63\_EN\_Build20151106 Configuration Guide*.

### 3.4.2 Deleting License

To delete the license file, choose **License > Delete the import license file** in the Service Manager after RG-SMP is stopped. A dialog box prompting you to confirm the deletion is displayed. Click **Yes**.

