

# RG-AP120-W

## Wireless Access Point Datasheet

Ruijie Networks Co., Ltd.

For further information, please visit our website <http://www.ruijienetworks.com>

## Product Overview

Ruijie RG-AP120-W Wall AP is a wireless access point designed for high-speed wireless LAN. The RG-AP120-W Wall AP adopts 802.11n standards and supports both FAT and FIT AP modes, which is ideal for dense wireless deployment in hotels, office towers, residential buildings and settings alike. The wall-mountable AP has the same size as a standard 86-type faceplate with integrated Ethernet and voice ports.

The Ruijie RG-AP120-W Wall AP with concise design and easy deployment can be easily installed with zero disruption to the interior finishes, offering the best choice for network deployment in places with delicate interior design such as hotels and office towers.

The RG-AP120-W Wall AP delivers data rates of up to 300Mbps per AP and adopts the 802.11a/b/g/n standards. The Wall AP provides 4 x RJ-45 FE LAN ports and an RJ-11 port (combo), delivering excellent availability and flexibility.



Ruijie RG-AP120-W Wall AP with 4 different color plate cover options

## Product Features

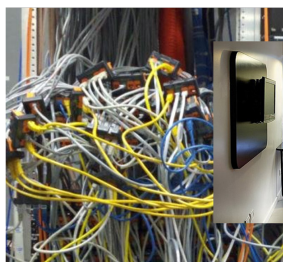
### Fast Deployment & Investment Protection

The Ruijie RG-AP120-W Wall AP adopts wall-mounted design with 2-step easy deployment:

- Step 1: Remove the original 86-type faceplate from the wall.
- Step 2: Directly install the plug-and-play Wall AP and connect with original UTP cable (PoE).

This breaks through traditional wireless network construction methods by reusing existing network cables and minimizes the impact of network construction in hotel or similar settings. As no additional cabling is required for installation, the Wall AP delivers maximum business agility and investment protection.

**Difficult to lay cable?**



**How to install AP in room?**



Traditional challenges on laying additional cabling for AP installation

## Full Signal Coverage

---

Traditional APs are installed in corridors and the indoor network signals are weak or even completely degenerated after wall penetration. The RG-AP120-W Wall AP, on the other hand, can be installed inside the room and hence ensures full coverage anywhere for the best user experience.

## Comprehensive Security Protection

---

### User access control

The RG-AP120-W Wall AP supports a broad library of user authentication methods such as Web, 802.1x, MAC address, and local authentication for customers' choice. It also supports Ruijie's end-to-end BYOD (Bring Your Own Device) Solution, complies with a standard access control system, and strictly defines access control policies in terms of user access, authorization, host compliance check, network behavior monitoring, and network threat defense. All these control measures ensure that users are authenticated before accessing a network and securely enjoy network services.

### Full security protection

Working with Ruijie's integrated network management system RG-SNC (Smart Network Commander) and RG-WS Wireless Access Controller Series, the RG-AP120-W Wall AP delivers powerful security highlights including Wireless Intrusion Detection System (WIDS), RF interference location, rogue AP countermeasures, anti-ARP spoofing, and DHCP.

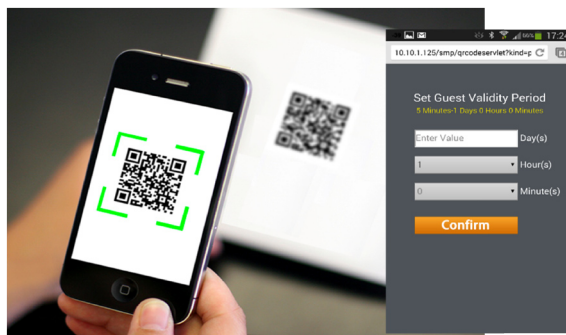
### Multiple easy-to-use authentication modes

The RG-AP120-W Wall AP can fully integrate with Ruijie Security Management Platform (RG-SMP) system which provides multiple advanced authentication options, such as Protected Extensible Authentication Protocol (PEAP), SMS Authentication, and QR Code Authentication.

If users are authenticated via PEAP, they just need to perform password authentication for once. In other words, they are only required to enter user credentials during their first network visit.

If users are authenticated via SMS, they need to sign in first with their mobile phone numbers and then obtain usernames and passwords from the SMS sent to their mobile phones.

QR code authentication is another wireless security highlight. After accessing a wireless network, users will obtain a QR code and need to get it scanned by any authorized staff's mobile phones to gain network access.



QR Code Guest Authentication

## Flexible Device Management Mode

### Flexible switching between the FAT and FIT modes

The Ruijie RG-AP120-W Wall AP supports both FAT and FIT AP modes, which can be flexibly selected as desired. The Wall AP allows easy upgrade of WLAN to a large-scale network, fully protecting users' investment costs. The Wall AP achieves what current hospitality solutions struggle to meet. With Ruijie's ACs (Wireless Access Controllers), network administrators can thereby perform centralized management and painless troubleshooting. Compared with traditional SOHO APs, the Ruijie RG-AP120-W Wall AP greatly facilitates O&M personnel to manage the whole wireless network.

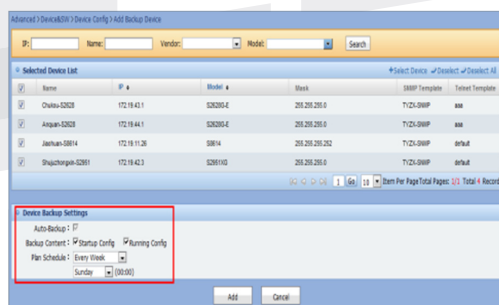
### Web-based management interface

The RG-AP120-W AP provides Web management interfaces for ACs and APs. These interfaces simplify wireless configuration and support integrated wireless network operations. Administrators can manage the APs as well as the APs' associated users, restrict user access, and control access bandwidths, thereby facilitating O&M personnel's wireless network planning, operation, and maintenance.

### Association with network management software

The RG-AP120-W AP is able to integrate with Ruijie network management software Smart Network Commander (SNC) to manage all wireless ACs and APs on a network. The management function includes:

- Configuration backup
- Device status inspection
- Device location tracking
- Wireless signal "heat map" diagram to display wireless signal distribution of APs in the actual operating environment



Ruijie RG-SNC Configuration Backup



Ruijie RG-SNC Device Management

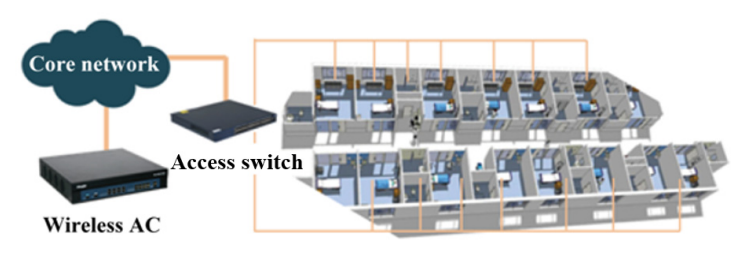
## Technical Specifications

Model	RG-AP120-W	
Hardware Specifications		
Radio	Dual-band (5GHz or 2.4GHz)	
Protocol	802.11 a/b/g/n	
Spatial Streams	2	
Max Throughput	300Mbps per AP	
Transmit Power	≤100mW, 20dBm	
Dimensions (W x H x D) (mm)	86 x 86 x 39	
Weight	0.4kg	
Service Port	1 x 10/100Base-T Ethernet uplink port (rear) 1 x punch down connector (rear) 4 x 10/100Base-T Ethernet port (front) 1 x RJ-11 voice port (front, combo)	
LED Indicators	Yes	
Power Supply	802.3af PoE	
Max Total Power	<6W	
Color plate cover options	White, black, silver and gold	
Temperature	Operating temperature: −10°C to 50°C	
	Storage temperature: −40°C to 70°C	
Humidity	Operating humidity: 5% to 95% (non-condensing)	
	Storage humidity: 5% to 95% (non-condensing)	
Software Features		
WLAN	Maximum clients per AP	Up to 25
	SSIDs	Up to 8
	SSID hiding	Yes
	Configuring the authentication mode, encryption mechanism, and VLAN attributes for each SSID	Yes
	WDS (bridge mode)	Yes
	Remote Intelligent Perception Technology (RIPT)	Yes
	Intelligent identification of smart device	Yes
	Intelligent load balancing based on the number of users or traffic	Yes
	STA limit	SSID-based RF card-based
	Bandwidth limit	STA/SSID/AP-based rate limit

Model	RG-AP120-W	
Security	PSK, Web, and 802.1x authentication	Yes
	Data encryption	WPA (TKIP), WPA2 (AES), WPA-PSK, and WEP (64 or 128 bits)
	QR code authentication	Yes
	SMS authentication	Yes
	PEAP authentication	Yes
	Data frame filtering	Whitelist, static blacklist, and dynamic blacklist
	User isolation	Yes
	Rogue AP detection and countermeasure	Yes
	Dynamic ACL assignment	Yes
	RADIUS	Yes
	CPU Protection Policy (CPP)	Yes
	Network Foundation Protection Policy (NFPP)	Yes
	WIDS	Yes
	Remote probe	Future release support
Routing	IPv4 address	Static and dynamic IP address
	IPv6 transparent transmission	Yes
	Multicast	Multicast to unicast conversion
Management and Maintenance	Network management	SNMP v1/v2C/v3 Telnet, SSH, TFTP, and FTP Web
	Graphical analysis of wireless heat map	Yes
	Real-time spectrum analysis	Yes
	Fault detection and alarm	Yes
	Statistics and logs	Yes
	Switching between the FAT and FIT modes	The AP working in FIT mode can switch to the FAT mode through the RG-WS wireless AC. The AP working in FAT mode can switch to the FIT mode through a local control port or Telnet
Location-based Service	Wireless Position Tracking	Yes

# Typical Applications

The RG-AP120-W Wall AP can be deployed in the networks of hotels, office towers, and residential buildings in the place of the original wired or telephone cable panel. The Wall AP provides full wireless coverage for a room with up to 32 end users.



Typical Topology Diagram for RG-AP120-W Wall AP

# Ordering Information

Model	Description	Remarks
RG-AP120-W	Wall-mounted Wireless AP, standard size of 86-type faceplate, built-in antenna, 4 different color plate cover options (white, black, silver and gold. White as default delivery), supports 802.11a/b/g/n, FAT/FIT mode, up to 300Mbps, PoE power supply (PoE devices need to be purchased separately)	Mandatory



Innovation Beyond Networks

---

#### Beijing

Fax : (8610) 6815-4205  
Phone : (8610) 5171-5996  
Email: info@ruijienetworks.com  
Address : 11/F, East Wing, ZhongYiPengao Plaza,  
No. 29 Fuxing Road, Haidian District,  
Beijing 100036, China

#### Hong Kong

Fax : (852) 3620-3470  
Phone : (852) 3620-3460  
Email : sales-HK@ruijienetworks.com  
Address: Unit 09, 20/F, Millennium City 2,  
378 Kwun Tong Road, Kowloon, Hong Kong

#### Malaysia

Fax : (603) 2181-1071  
Phone : (603) 2181-1071  
Email: sales-MY@ruijienetworks.com  
Address : Office Suite 19-12-3A, Level 12, UOA Center,  
No. 19 Jalan Pinang, 50450 Kuala Lumpur,  
Malaysia

#### OEM Cooperation Division

Phone: (8610) 5171-5995  
Email: OEM@ruijienetworks.com  
Address : 11/F, East Wing, ZhongYiPengao Plaza,  
No. 29 Fuxing Road, Haidian District,  
Beijing 100036, China

For further information, please visit our website <http://www.ruijienetworks.com>

Copyright © 2016 Ruijie Networks Co., Ltd. All rights reserved. Ruijie reserves the right to change, modify, transfer, or otherwise revise this publication without notice, and the most current version of the publication shall be applicable.